

## Form C: Type Test Verification Report

Type Approval and **Manufacturer** declaration of compliance with the requirements of G98.

This form should be used when making a Type Test submission to the Energy Networks Association (ENA).

If the **Micro-generator** is **Fully Type Tested** and already registered with the ENA **Type Test Verification Report** Register, the **Installation Document** should include the **Manufacturer's** Reference Number (the Product ID), and this form does not need to be submitted.

Where the **Micro-generator** is not registered with the ENA **Type Test Verification Report** Register this form needs to be completed and provided to the **DNO**, to confirm that the **Micro-generator** has been tested to satisfy the requirements of this EREC G98.

<b>Manufacturer's</b> reference number		<b>LXP-3.6K Hybrid</b>	
<b>Micro-generator</b> technology		<b>Hybrid Inverter</b>	
<b>Manufacturer</b> name		<b>Shenzhen Lux Power Technology Co.,Ltd</b>	
Address		5th Floor,Building 11, Phase III, Yangbei Industrial Zone, Huangtian Community, Hangcheng Street, Baoan District, Shenzhen City, China	
Tel	+86 755 8520 9056	Fax	
E-mail	service@luxpowertek.com	Web site	www.luxpowertek.com
<b>Registered Capacity</b> , use separate sheet if more than one connection option.	Connection Option		
	3.6	kW single phase, single, split or three phase system	
	NA	kW three phase	
	NA	kW two phases in three phase system	
	NA	kW two phases split phase system	
<b>Manufacturer Type Test</b> declaration. - I certify that all products supplied by the company with the above <b>Type Tested</b> reference number will be manufactured and tested to ensure that they perform as stated in this document, prior to shipment to site and that no site modifications are required to ensure that the product meets all the requirements of EREC G98.			
Signed	<i>James Wang</i>	On behalf of	<b>Shenzhen Lux Power Technology Co.,Ltd</b>

Note that testing can be done by the **Manufacturer** of an individual component or by an external test house.

Where parts of the testing are carried out by persons or organisations other than the **Manufacturer** then that person or organisation shall keep copies of all test records and results supplied to them to verify that the testing has been carried out by people with sufficient technical competency to carry out the tests.

**1. Operating Range:** This test should be carried out as specified in A.1.2.10.

**Active Power** shall be recorded every second. The tests will verify that the **Micro-generator** can operate within the required ranges for the specified period of time.

The **Interface Protection** shall be disabled during the tests.

In case of a PV **Micro-generator** the PV primary source may be replaced by a **DC** source.

In case of a full converter **Micro-generator** (eg wind) the primary source and the prime mover

**Inverter/rectifier** may be replaced by a **DC** source.

In case of a DFIG **Micro-generator** the mechanical drive system may be replaced by a test bench Motor.

<p>Test 1 Voltage = 85% of nominal (195.5 V), Frequency = 47 Hz, Power Factor = 1, Period of test 20 s</p>	<p>Pass</p> <table border="1"> <caption>Test 1 Data</caption> <thead> <tr> <th>Sample</th> <th>U-E1</th> <th>FU-E1</th> <th>P-E1</th> </tr> </thead> <tbody> <tr><td>1</td><td>200</td><td>50</td><td>3000</td></tr> <tr><td>250</td><td>200</td><td>50</td><td>3000</td></tr> <tr><td>499</td><td>200</td><td>50</td><td>3000</td></tr> <tr><td>748</td><td>200</td><td>50</td><td>3000</td></tr> <tr><td>997</td><td>200</td><td>50</td><td>3000</td></tr> <tr><td>1246</td><td>200</td><td>50</td><td>3000</td></tr> <tr><td>1495</td><td>200</td><td>50</td><td>3000</td></tr> <tr><td>1744</td><td>200</td><td>50</td><td>3000</td></tr> <tr><td>1993</td><td>200</td><td>50</td><td>3000</td></tr> <tr><td>2242</td><td>200</td><td>50</td><td>3000</td></tr> <tr><td>2491</td><td>200</td><td>50</td><td>3000</td></tr> <tr><td>2740</td><td>200</td><td>50</td><td>3000</td></tr> <tr><td>2989</td><td>200</td><td>50</td><td>3000</td></tr> <tr><td>3238</td><td>200</td><td>50</td><td>3000</td></tr> <tr><td>3487</td><td>200</td><td>50</td><td>3000</td></tr> <tr><td>3736</td><td>200</td><td>50</td><td>3000</td></tr> <tr><td>3985</td><td>200</td><td>50</td><td>3000</td></tr> <tr><td>4234</td><td>200</td><td>50</td><td>3000</td></tr> <tr><td>4483</td><td>200</td><td>50</td><td>3000</td></tr> <tr><td>4732</td><td>200</td><td>50</td><td>3000</td></tr> <tr><td>4981</td><td>200</td><td>50</td><td>3000</td></tr> <tr><td>5230</td><td>200</td><td>50</td><td>3000</td></tr> <tr><td>5479</td><td>200</td><td>50</td><td>3000</td></tr> </tbody> </table>	Sample	U-E1	FU-E1	P-E1	1	200	50	3000	250	200	50	3000	499	200	50	3000	748	200	50	3000	997	200	50	3000	1246	200	50	3000	1495	200	50	3000	1744	200	50	3000	1993	200	50	3000	2242	200	50	3000	2491	200	50	3000	2740	200	50	3000	2989	200	50	3000	3238	200	50	3000	3487	200	50	3000	3736	200	50	3000	3985	200	50	3000	4234	200	50	3000	4483	200	50	3000	4732	200	50	3000	4981	200	50	3000	5230	200	50	3000	5479	200	50	3000
Sample	U-E1	FU-E1	P-E1																																																																																														
1	200	50	3000																																																																																														
250	200	50	3000																																																																																														
499	200	50	3000																																																																																														
748	200	50	3000																																																																																														
997	200	50	3000																																																																																														
1246	200	50	3000																																																																																														
1495	200	50	3000																																																																																														
1744	200	50	3000																																																																																														
1993	200	50	3000																																																																																														
2242	200	50	3000																																																																																														
2491	200	50	3000																																																																																														
2740	200	50	3000																																																																																														
2989	200	50	3000																																																																																														
3238	200	50	3000																																																																																														
3487	200	50	3000																																																																																														
3736	200	50	3000																																																																																														
3985	200	50	3000																																																																																														
4234	200	50	3000																																																																																														
4483	200	50	3000																																																																																														
4732	200	50	3000																																																																																														
4981	200	50	3000																																																																																														
5230	200	50	3000																																																																																														
5479	200	50	3000																																																																																														
<p>Test 2 Voltage = 85% of nominal (195.5 V), Frequency = 47.5 Hz, Power Factor = 1, Period of test 90 minutes</p>	<p>Pass</p> <table border="1"> <caption>Test 2 Data</caption> <thead> <tr> <th>Sample</th> <th>U-E1</th> <th>FU-E1</th> <th>P-E1</th> </tr> </thead> <tbody> <tr><td>1</td><td>200</td><td>50</td><td>3000</td></tr> <tr><td>245</td><td>200</td><td>50</td><td>3000</td></tr> <tr><td>489</td><td>200</td><td>50</td><td>3000</td></tr> <tr><td>733</td><td>200</td><td>50</td><td>3000</td></tr> <tr><td>977</td><td>200</td><td>50</td><td>3000</td></tr> <tr><td>1221</td><td>200</td><td>50</td><td>3000</td></tr> <tr><td>1465</td><td>200</td><td>50</td><td>3000</td></tr> <tr><td>1709</td><td>200</td><td>50</td><td>3000</td></tr> <tr><td>1953</td><td>200</td><td>50</td><td>3000</td></tr> <tr><td>2197</td><td>200</td><td>50</td><td>3000</td></tr> <tr><td>2441</td><td>200</td><td>50</td><td>3000</td></tr> <tr><td>2685</td><td>200</td><td>50</td><td>3000</td></tr> <tr><td>2929</td><td>200</td><td>50</td><td>3000</td></tr> <tr><td>3173</td><td>200</td><td>50</td><td>3000</td></tr> <tr><td>3417</td><td>200</td><td>50</td><td>3000</td></tr> <tr><td>3661</td><td>200</td><td>50</td><td>3000</td></tr> <tr><td>3905</td><td>200</td><td>50</td><td>3000</td></tr> <tr><td>4149</td><td>200</td><td>50</td><td>3000</td></tr> <tr><td>4393</td><td>200</td><td>50</td><td>3000</td></tr> <tr><td>4637</td><td>200</td><td>50</td><td>3000</td></tr> <tr><td>4881</td><td>200</td><td>50</td><td>3000</td></tr> <tr><td>5125</td><td>200</td><td>50</td><td>3000</td></tr> <tr><td>5369</td><td>200</td><td>50</td><td>3000</td></tr> </tbody> </table>	Sample	U-E1	FU-E1	P-E1	1	200	50	3000	245	200	50	3000	489	200	50	3000	733	200	50	3000	977	200	50	3000	1221	200	50	3000	1465	200	50	3000	1709	200	50	3000	1953	200	50	3000	2197	200	50	3000	2441	200	50	3000	2685	200	50	3000	2929	200	50	3000	3173	200	50	3000	3417	200	50	3000	3661	200	50	3000	3905	200	50	3000	4149	200	50	3000	4393	200	50	3000	4637	200	50	3000	4881	200	50	3000	5125	200	50	3000	5369	200	50	3000
Sample	U-E1	FU-E1	P-E1																																																																																														
1	200	50	3000																																																																																														
245	200	50	3000																																																																																														
489	200	50	3000																																																																																														
733	200	50	3000																																																																																														
977	200	50	3000																																																																																														
1221	200	50	3000																																																																																														
1465	200	50	3000																																																																																														
1709	200	50	3000																																																																																														
1953	200	50	3000																																																																																														
2197	200	50	3000																																																																																														
2441	200	50	3000																																																																																														
2685	200	50	3000																																																																																														
2929	200	50	3000																																																																																														
3173	200	50	3000																																																																																														
3417	200	50	3000																																																																																														
3661	200	50	3000																																																																																														
3905	200	50	3000																																																																																														
4149	200	50	3000																																																																																														
4393	200	50	3000																																																																																														
4637	200	50	3000																																																																																														
4881	200	50	3000																																																																																														
5125	200	50	3000																																																																																														
5369	200	50	3000																																																																																														
<p>Test 3</p>	<p>Pass</p>																																																																																																

# Declaration

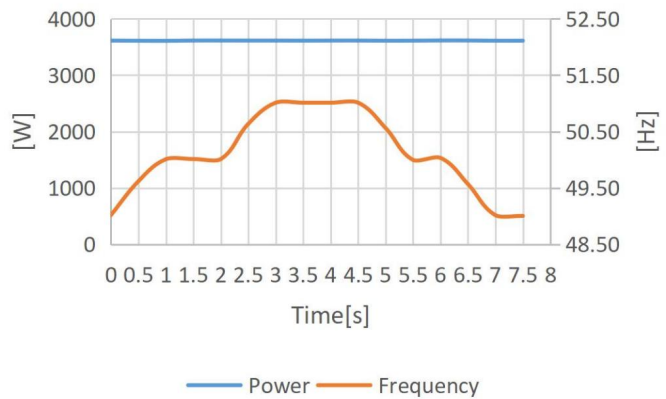


<p>Voltage = 110% of nominal (253 V).</p> <p>Frequency = 51.5 Hz</p> <p>Power factor = 1</p> <p>Period of test 90 minutes</p>	<table border="1"> <caption>Test 1 Data</caption> <thead> <tr> <th>Sample</th> <th>U-E1</th> <th>FU-E1</th> <th>P-E1</th> </tr> </thead> <tbody> <tr><td>1</td><td>250</td><td>50</td><td>250</td></tr> <tr><td>247</td><td>250</td><td>50</td><td>250</td></tr> <tr><td>493</td><td>250</td><td>50</td><td>250</td></tr> <tr><td>739</td><td>250</td><td>50</td><td>250</td></tr> <tr><td>985</td><td>250</td><td>50</td><td>250</td></tr> <tr><td>1231</td><td>250</td><td>50</td><td>250</td></tr> <tr><td>1477</td><td>250</td><td>50</td><td>250</td></tr> <tr><td>1723</td><td>250</td><td>50</td><td>250</td></tr> <tr><td>1969</td><td>250</td><td>50</td><td>250</td></tr> <tr><td>2215</td><td>250</td><td>50</td><td>250</td></tr> <tr><td>2461</td><td>250</td><td>50</td><td>250</td></tr> <tr><td>2707</td><td>250</td><td>50</td><td>250</td></tr> <tr><td>2953</td><td>250</td><td>50</td><td>250</td></tr> <tr><td>3199</td><td>250</td><td>50</td><td>250</td></tr> <tr><td>3445</td><td>250</td><td>50</td><td>250</td></tr> <tr><td>3691</td><td>250</td><td>50</td><td>250</td></tr> <tr><td>3937</td><td>250</td><td>50</td><td>250</td></tr> <tr><td>4183</td><td>250</td><td>50</td><td>250</td></tr> <tr><td>4429</td><td>250</td><td>50</td><td>250</td></tr> <tr><td>4675</td><td>250</td><td>50</td><td>250</td></tr> <tr><td>4921</td><td>250</td><td>50</td><td>250</td></tr> <tr><td>5167</td><td>250</td><td>50</td><td>250</td></tr> <tr><td>5413</td><td>250</td><td>50</td><td>250</td></tr> </tbody> </table>	Sample	U-E1	FU-E1	P-E1	1	250	50	250	247	250	50	250	493	250	50	250	739	250	50	250	985	250	50	250	1231	250	50	250	1477	250	50	250	1723	250	50	250	1969	250	50	250	2215	250	50	250	2461	250	50	250	2707	250	50	250	2953	250	50	250	3199	250	50	250	3445	250	50	250	3691	250	50	250	3937	250	50	250	4183	250	50	250	4429	250	50	250	4675	250	50	250	4921	250	50	250	5167	250	50	250	5413	250	50	250
Sample	U-E1	FU-E1	P-E1																																																																																														
1	250	50	250																																																																																														
247	250	50	250																																																																																														
493	250	50	250																																																																																														
739	250	50	250																																																																																														
985	250	50	250																																																																																														
1231	250	50	250																																																																																														
1477	250	50	250																																																																																														
1723	250	50	250																																																																																														
1969	250	50	250																																																																																														
2215	250	50	250																																																																																														
2461	250	50	250																																																																																														
2707	250	50	250																																																																																														
2953	250	50	250																																																																																														
3199	250	50	250																																																																																														
3445	250	50	250																																																																																														
3691	250	50	250																																																																																														
3937	250	50	250																																																																																														
4183	250	50	250																																																																																														
4429	250	50	250																																																																																														
4675	250	50	250																																																																																														
4921	250	50	250																																																																																														
5167	250	50	250																																																																																														
5413	250	50	250																																																																																														
<p>Test 4</p> <p>Voltage = 110% of nominal (253 V).</p> <p>Frequency = 52.0 Hz</p> <p>Power factor = 1</p> <p>Period of test 15 minutes</p>	<p>Pass</p> <table border="1"> <caption>Test 4 Data</caption> <thead> <tr> <th>Sample</th> <th>U-E1</th> <th>FU-E1</th> <th>P-E1</th> </tr> </thead> <tbody> <tr><td>1</td><td>250</td><td>50</td><td>250</td></tr> <tr><td>44</td><td>250</td><td>50</td><td>250</td></tr> <tr><td>87</td><td>250</td><td>50</td><td>250</td></tr> <tr><td>130</td><td>250</td><td>50</td><td>250</td></tr> <tr><td>173</td><td>250</td><td>50</td><td>250</td></tr> <tr><td>216</td><td>250</td><td>50</td><td>250</td></tr> <tr><td>259</td><td>250</td><td>50</td><td>250</td></tr> <tr><td>302</td><td>250</td><td>50</td><td>250</td></tr> <tr><td>345</td><td>250</td><td>50</td><td>250</td></tr> <tr><td>388</td><td>250</td><td>50</td><td>250</td></tr> <tr><td>431</td><td>250</td><td>50</td><td>250</td></tr> <tr><td>474</td><td>250</td><td>50</td><td>250</td></tr> <tr><td>517</td><td>250</td><td>50</td><td>250</td></tr> <tr><td>560</td><td>250</td><td>50</td><td>250</td></tr> <tr><td>603</td><td>250</td><td>50</td><td>250</td></tr> <tr><td>646</td><td>250</td><td>50</td><td>250</td></tr> <tr><td>689</td><td>250</td><td>50</td><td>250</td></tr> <tr><td>732</td><td>250</td><td>50</td><td>250</td></tr> <tr><td>775</td><td>250</td><td>50</td><td>250</td></tr> <tr><td>818</td><td>250</td><td>50</td><td>250</td></tr> <tr><td>861</td><td>250</td><td>50</td><td>250</td></tr> <tr><td>904</td><td>250</td><td>50</td><td>250</td></tr> <tr><td>947</td><td>250</td><td>50</td><td>250</td></tr> </tbody> </table>	Sample	U-E1	FU-E1	P-E1	1	250	50	250	44	250	50	250	87	250	50	250	130	250	50	250	173	250	50	250	216	250	50	250	259	250	50	250	302	250	50	250	345	250	50	250	388	250	50	250	431	250	50	250	474	250	50	250	517	250	50	250	560	250	50	250	603	250	50	250	646	250	50	250	689	250	50	250	732	250	50	250	775	250	50	250	818	250	50	250	861	250	50	250	904	250	50	250	947	250	50	250
Sample	U-E1	FU-E1	P-E1																																																																																														
1	250	50	250																																																																																														
44	250	50	250																																																																																														
87	250	50	250																																																																																														
130	250	50	250																																																																																														
173	250	50	250																																																																																														
216	250	50	250																																																																																														
259	250	50	250																																																																																														
302	250	50	250																																																																																														
345	250	50	250																																																																																														
388	250	50	250																																																																																														
431	250	50	250																																																																																														
474	250	50	250																																																																																														
517	250	50	250																																																																																														
560	250	50	250																																																																																														
603	250	50	250																																																																																														
646	250	50	250																																																																																														
689	250	50	250																																																																																														
732	250	50	250																																																																																														
775	250	50	250																																																																																														
818	250	50	250																																																																																														
861	250	50	250																																																																																														
904	250	50	250																																																																																														
947	250	50	250																																																																																														
<p>Test 5</p> <p>Voltage = 100% of nominal (230 V).</p> <p>Frequency = 50.0 Hz</p> <p>Power factor = 1</p> <p>Period of test 90 minutes</p>	<p>Pass</p> <table border="1"> <caption>Test 5 Data</caption> <thead> <tr> <th>Sample</th> <th>U-E1</th> <th>FU-E1</th> <th>P-E1</th> </tr> </thead> <tbody> <tr><td>1</td><td>220</td><td>50</td><td>220</td></tr> <tr><td>236</td><td>220</td><td>50</td><td>220</td></tr> <tr><td>471</td><td>220</td><td>50</td><td>220</td></tr> <tr><td>706</td><td>220</td><td>50</td><td>220</td></tr> <tr><td>941</td><td>220</td><td>50</td><td>220</td></tr> <tr><td>1176</td><td>220</td><td>50</td><td>220</td></tr> <tr><td>1411</td><td>220</td><td>50</td><td>220</td></tr> <tr><td>1646</td><td>220</td><td>50</td><td>220</td></tr> <tr><td>1881</td><td>220</td><td>50</td><td>220</td></tr> <tr><td>2116</td><td>220</td><td>50</td><td>220</td></tr> <tr><td>2351</td><td>220</td><td>50</td><td>220</td></tr> <tr><td>2586</td><td>220</td><td>50</td><td>220</td></tr> <tr><td>2821</td><td>220</td><td>50</td><td>220</td></tr> <tr><td>3056</td><td>220</td><td>50</td><td>220</td></tr> <tr><td>3291</td><td>220</td><td>50</td><td>220</td></tr> <tr><td>3526</td><td>220</td><td>50</td><td>220</td></tr> <tr><td>3761</td><td>220</td><td>50</td><td>220</td></tr> <tr><td>3996</td><td>220</td><td>50</td><td>220</td></tr> <tr><td>4231</td><td>220</td><td>50</td><td>220</td></tr> <tr><td>4466</td><td>220</td><td>50</td><td>220</td></tr> <tr><td>4701</td><td>220</td><td>50</td><td>220</td></tr> <tr><td>4936</td><td>220</td><td>50</td><td>220</td></tr> <tr><td>5171</td><td>220</td><td>50</td><td>220</td></tr> </tbody> </table>	Sample	U-E1	FU-E1	P-E1	1	220	50	220	236	220	50	220	471	220	50	220	706	220	50	220	941	220	50	220	1176	220	50	220	1411	220	50	220	1646	220	50	220	1881	220	50	220	2116	220	50	220	2351	220	50	220	2586	220	50	220	2821	220	50	220	3056	220	50	220	3291	220	50	220	3526	220	50	220	3761	220	50	220	3996	220	50	220	4231	220	50	220	4466	220	50	220	4701	220	50	220	4936	220	50	220	5171	220	50	220
Sample	U-E1	FU-E1	P-E1																																																																																														
1	220	50	220																																																																																														
236	220	50	220																																																																																														
471	220	50	220																																																																																														
706	220	50	220																																																																																														
941	220	50	220																																																																																														
1176	220	50	220																																																																																														
1411	220	50	220																																																																																														
1646	220	50	220																																																																																														
1881	220	50	220																																																																																														
2116	220	50	220																																																																																														
2351	220	50	220																																																																																														
2586	220	50	220																																																																																														
2821	220	50	220																																																																																														
3056	220	50	220																																																																																														
3291	220	50	220																																																																																														
3526	220	50	220																																																																																														
3761	220	50	220																																																																																														
3996	220	50	220																																																																																														
4231	220	50	220																																																																																														
4466	220	50	220																																																																																														
4701	220	50	220																																																																																														
4936	220	50	220																																																																																														
5171	220	50	220																																																																																														
<p>Test 6 RoCoF withstand</p> <p>Confirm that the Power Generating Module is capable of staying connected</p>	<p>Pass</p>																																																																																																

# Declaration



to the Distribution Network and operate at rates of change of frequency up to 1 Hzs-1 as measured over a period of 500 ms. Note that this is not expected to be demonstrated on site.



**2.Power Quality – Harmonics:** These tests should be carried out as specified in BS EN 61000-3-2. The chosen test should be undertaken with a fixed source of energy at two power levels a) between 45 and 55% and b) at 100% of Registered Capacity. The test requirements are specified in Annex A1 A.1.3.1 (Inverter connected) or Annex A2 A.2.3.1 (Synchronous).

**Micro-generator tested to BS EN 61000-3-2**

Micro-generator rating per phase (rpp)		3.6	kW			
Harmonic	At 45-55% of Registered Capacity		100% of Registered Capacity			
	Measured Value MV in Amps		Measured Value MV in Amps		Limit in BS EN 61000-3-2 in Amps	Higher limit for odd harmonics 21 and above
2	0,025	0,031	0,044	0,054	1.080	
3	0,056	0,069	0,091	0,112	2.300	
4	0,054	0,066	0,065	0,080	0.430	
5	0,013	0,016	0,019	0,023	1.140	
6	0,037	0,045	0,032	0,039	0.300	
7	0,031	0,038	0,033	0,040	0.770	
8	0,010	0,012	0,010	0,012	0.230	
9	0,017	0,021	0,024	0,029	0.400	

# Declaration



10	0,011	0,013	0,023	0,028	0.184	
11	0,008	0,010	0,014	0,017	0.330	
12	0,011	0,013	0,005	0,006	0.153	
13	0,005	0,006	0,004	0,005	0.210	
14	0,020	0,025	0,021	0,026	0.131	
15	0,006	0,007	0,019	0,023	0.150	
16	0,013	0,016	0,020	0,025	0.115	
17	0,009	0,011	0,007	0,009	0.132	
18	0,025	0,031	0,028	0,034	0.102	
19	0,010	0,012	0,009	0,011	0.118	
20	0,011	0,013	0,017	0,021	0.092	
21	0,005	0,006	0,003	0,004	0.107	0.160
22	0,024	0,029	0,026	0,032	0.084	
23	0,010	0,012	0,011	0,013	0.098	0.147
24	0,015	0,018	0,009	0,011	0.077	
25	0,007	0,009	0,009	0,011	0.090	0.135
26	0,009	0,011	0,013	0,016	0.071	
27	0,002	0,002	0,004	0,005	0.083	0.124
28	0,009	0,011	0,004	0,005	0.066	
29	0,004	0,005	0,006	0,007	0.078	0.117
30	0,003	0,004	0,007	0,009	0.061	
31	0,005	0,006	0,005	0,006	0.073	0.109
32	0,002	0,002	0,003	0,004	0.058	
33	0,005	0,006	0,009	0,011	0.068	0.102

# Declaration

34	0,006	0,007	0,005	0,006	0.054	
35	0,004	0,005	0,008	0,010	0.064	0.096
36	0.0023	0.002 4	0.0113	0.0116	0.051	
37	0.0048	0.004 9	0.0031	0.0032	0.061	0.091
38	0.0048	0.004 9	0.0032	0.0033	0.048	
39	0.0023	0.002 4	0.0022	0.0022	0.058	0.087
40	0.008	0.008 2	0.0103	0.0105	0.046	

Note the higher limits for odd harmonics 21 and above are only allowable under certain conditions, if these higher limits are utilised please state the exemption used as detailed in part 6.2.3.4 of BS EN 61000-3-2 in the box below.

**3.Power Quality – Voltage fluctuations and Flicker:** These tests should be undertaken in accordance with EREC G98 Annex A1 A.1.3.3 (**Inverter** connected) or Annex A2 A.2.3.3 (Synchronous).

	Starting			Stopping			Running	
	d max	d c	d(t)	d max	d c	d(t)	P <sub>st</sub>	P <sub>ft</sub> 2 hours
Measured Values at test impedance	0,60%	0,54%	0,00%	0,78%	0,78%	0,00%	0,06	0,06
Normalised to standard impedance	0,60%	0,54%	0,00%	0,78%	0,78%	0,00%	0,06	0,06
Normalised			3,3%			3,3%		

# Declaration

to required maximum impedance	4%	3,3%	500ms	4%	3,3%	500ms	1,0	0,65
Limits set under BS EN 61000-3-11	4%	3.3%	3.3%	4%	3.3%	3.3%	1.0	0.65
Test Impedance	R	0.4	$\Omega$	X	0.25	$\Omega$		
Standard Impedance	R	0.24 * 0.4 ^	$\Omega$	X	0.15 * 0.25 ^	$\Omega$		
Maximum Impedance	R	0.4	$\Omega$	X	0.25	$\Omega$		
<p>Applies to three phase and split single phase <b>Micro-generators</b>.</p> <p>^ Applies to single phase <b>Micro-generators</b> and <b>Micro-generators</b> using two phases on a three phase system. For voltage change and flicker measurements the following formula is to be used to convert the measured values to the normalised values where the power factor of the generation output is 0.98 or above.</p> <p>Normalised value = Measured value*reference source resistance/measured source resistance at test point.</p> <p>Single phase units reference source resistance is 0.4 <math>\Omega</math></p> <p>Two phase units in a three phase system reference source resistance is 0.4 <math>\Omega</math>.</p> <p>Two phase units in a split phase system reference source resistance is 0.24 <math>\Omega</math>.</p> <p>Three phase units reference source resistance is 0.24 <math>\Omega</math>.</p> <p>Where the power factor of the output is under 0.98 then the X to R ratio of the test impedance should be close to that of the Standard Impedance.</p> <p>The stopping test should be a trip from full load operation.</p> <p>The duration of these tests need to conform to the particular requirements set out in the testing notes for the technology under test. Dates and location of the test need to be noted below.</p>								
Test start date	20, August, 2022			Test end date	20, August, 2022			
Test location	Luxpower testing laboratory & Intertek Testing Services Shenzhen Ltd. Guangzhou Branch							

**4. Power quality – DC injection:** This test should be carried out in accordance with A 1.3.4 as

# Declaration

applicable. The % DC injection (“as % of rated AC current” below) is calculated as follows:

% DC injection = Recorded DC value in Amps / base current where the base current is the Registered Capacity (W) / 230 V. The % DC injection should not be greater than 0.25%.

Test power level	20%	50%	75%	100%
Recorded value in Amps	0,01	0,011	-0,009	0,011
as % of rated AC current	0,06%	0,07%	-0,05%	0,07%
Limit	0.25%	0.25%	0.25%	0.25%

**5. Power Quality – Power factor:** This test shall be carried out in accordance with EN 50538 Annex D.3.4.1 but with nominal voltage -6% and +10%. Voltage to be maintained within ±1.5% of the stated level during the test.

	216.2 V	230 V	253 V
20% of <b>Registered Capacity</b>	0.9902	0.9905	0.9896
50% of <b>Registered Capacity</b>	0.9935	0.9932	0.9939
75% of <b>Registered Capacity</b>	0.9978	0.9973	0.997
100% of <b>Registered Capacity</b>	0.9983	0.998	0.9968
Limit	>0.95	>0.95	>0.95

**6. Protection – Frequency tests:** These tests should be carried out in accordance with EN 50438 Annex D.2.4 and the notes in EREC G98 Annex A1 A.1.2.3 (**Inverter** connected) or Annex A2 A.2.2.3 (Synchronous)

Function	Setting		Trip test		“No trip tests”	
	Frequency	Time delay	Frequency	Time delay	Frequency /time	Confirm no trip
U/F stage 1	47.5 Hz	20 s	47.48 Hz	20.1s	47.7 Hz 30 s	No trip

# Declaration

U/F stage 2	47 Hz	0.5 s	47 Hz	0.516s	47.2 Hz 19.5 s	No trip
					46.8 Hz 0.45 s	No trip
O/F stage 1	52 Hz	0.5 s	52.01 Hz	0.538s	51.8 Hz 120 s	No trip
					52.2 Hz 0.45 s	No trip

Note. For frequency trip tests the frequency required to trip is the setting  $\pm 0.1$  Hz. In order to measure the time delay a larger deviation than the minimum required to operate the protection can be used. The “No trip tests” need to be carried out at the setting  $\pm 0.2$  Hz and for the relevant times as shown in the table above to ensure that the protection will not trip in error.

**7. Protection – Voltage tests:** These tests should be carried out in accordance with EN 50438 Annex D.2.3 and the notes in EREC G98 Annex A1 A.1.2.2 (**Inverter** connected) or Annex A2 A.2.2.2 (Synchronous)

Function	Setting		Trip test		“No trip tests”	
	Voltage	Time delay	Voltage	Time delay	Voltage /time	Confirm no trip
UV	184 V	2.5 s	184 V	2.62s	188 V 5.0 s	No trip
					180 V 2.45 s	No trip
O/V stage 1	262.2 V	1.0 s	262.5 V	1.02s	258.2 V 5.0 s	No trip
O/V stage 2	273.7 V	0.5 s	274 V	0.56s	269.7 V 0.95 s	No trip
					277.7 V 0.45 s	No trip

Note for Voltage tests the Voltage required to trip is the setting  $\pm 3.45$  V. The time delay can be measured at a larger deviation than the minimum required to operate the protection. The No trip tests need to be carried out at the setting  $\pm 4$  V and for the relevant times as shown in the table above to ensure that the protection will not trip in error.

**8. Protection – Loss of Mains test:** For PV Inverters shall be tested in accordance with BS EN 62116. Other Inverters

# Declaration



should be tested in accordance with EN 50438 Annex D.2.5 at 10%, 55% and 100% of rated power.

To be carried out at three output power levels with a tolerance of plus or minus 5% in Test Power levels.

Test Power	10%	55%	100%	10%	55%	100%
Balancing load on islanded network	95% of <b>Registered Capacity</b>	95% of <b>Registered Capacity</b>	95% of <b>Registered Capacity</b>	105% of <b>Registered Capacity</b>	105% of <b>Registered Capacity</b>	105% of <b>Registered Capacity</b>
Trip time. Limit is 0.5 s	0.229s	0.239s	0.272s	0.343s	0.296s	0.240s

For Multi phase **Micro-generators** confirm that the device shuts down correctly after the removal of a single fuse as well as operation of all phases.

Test Power	10%	55%	100%	10%	55%	100%
Balancing load on islanded network	95% of <b>Registered Capacity</b>	95% of <b>Registered Capacity</b>	95% of <b>Registered Capacity</b>	105% of <b>Registered Capacity</b>	105% of <b>Registered Capacity</b>	105% of <b>Registered Capacity</b>
Trip time. Ph1 fuse removed	NA	NA	NA	NA	NA	NA

Test Power	10%	55%	100%	10%	55%	100%
Balancing load on islanded network	95% of <b>Registered Capacity</b>	95% of <b>Registered Capacity</b>	95% of <b>Registered Capacity</b>	105% of <b>Registered Capacity</b>	105% of <b>Registered Capacity</b>	105% of <b>Registered Capacity</b>
Trip time. Ph2 fuse removed	NA	NA	NA	NA	NA	NA

Test Power	10%	55%	100%	10%	55%	100%
Balancing load on islanded network	95% of <b>Registered Capacity</b>	95% of <b>Registered Capacity</b>	95% of <b>Registered Capacity</b>	105% of <b>Registered Capacity</b>	105% of <b>Registered Capacity</b>	105% of <b>Registered Capacity</b>
Trip time. Ph3 fuse removed	NA	NA	NA	NA	NA	NA

Note for technologies which have a substantial shut down time this can be added to the 0.5 s in establishing that the trip occurred in less than 0.5 s. Maximum shut down time could therefore be up to 1.0 s for these

# Declaration

technologies.

Indicate additional shut down time included in above results.

For **Inverters** tested to BS EN 62116 the following sub set of tests should be recorded in the following table.

Test Power and imbalance	33% -5% Q Test 22	66% -5% Q Test 12	100% -5% P Test 5	33% +5% Q Test 31	66% +5% Q Test 21	100% +5% P Test 10
Trip time. Limit is 0.5 s	0.268s	0.295s	0.275s	0.278s	0.279s	0.295s

**9. Protection – Frequency change, Vector Shift Stability test:** This test should be carried out in accordance with EREC G98 Annex A1 A.1.2.6 (**Inverter** connected) or Annex A2 A.2.2.6 (Synchronous).

	Start Frequency	Change	Confirm no trip
Positive Vector Shift	49.0 Hz	+50 degrees	No trip
Negative Vector Shift	50.0 Hz	- 50 degrees	No trip

**10. Protection – Frequency change, RoCoF Stability test:** The requirement is specified in section 11.3, test procedure in Annex A.1.2.6 (**Inverter** connected) or Annex A2 A.2.2.6 (Synchronous).

Ramp range	Test frequency ramp:	Test Duration	Confirm no trip
49.0 Hz to 51.0 Hz	+0.95 Hzs <sup>-1</sup>	2.1 s	No trip
51.0 Hz to 49.0 Hz	-0.95 Hzs <sup>-1</sup>	2.1 s	No trip

**11. Limited Frequency Sensitive Mode – Overfrequency test:** This test should be carried out in accordance with EN 50438 Annex D.3.3 Power response to over- frequency. The test should be carried out using the specific threshold frequency of 50.4 Hz and **Droop** of 10%.

Test sequence at <b>Registered Capacity &gt;80%</b>	Measured <b>Active Power</b> Output	Frequency	Primary Power Source	<b>Active Power</b> Gradient
Step a) 50.00 Hz ±0.01 Hz	3610 W	50 Hz	3692 W	-
Step b) 50.45 Hz ±0.05 Hz	3571 W	50.45 Hz		-

# Declaration

Step c) 50.70 Hz $\pm$ 0.10 Hz	3384 W	50.70 Hz		-
Step d) 51.15 Hz $\pm$ 0.05 Hz	3090 W	51.15 Hz		-
Step e) 50.70 Hz $\pm$ 0.10 Hz	3387 W	50.70 Hz		-
Step f) 50.45 Hz $\pm$ 0.05 Hz	3575 W	50.45 Hz		-
Step g) 50.00 Hz $\pm$ 0.01 Hz	3609 W	50 Hz		
Test sequence at <b>Registered Capacity 40% - 60%</b>	Measured <b>Active Power</b> Output	Frequency	Primary Power Source	<b>Active Power Gradient</b>
Step a) 50.00 Hz $\pm$ 0.01 Hz	1806 W	50 Hz	1878 W	-
Step b) 50.45 Hz $\pm$ 0.05 Hz	1762 W	50.45 Hz		-
Step c) 50.70 Hz $\pm$ 0.10 Hz	1587 W	50.70 Hz		-
Step d) 51.15 Hz $\pm$ 0.05 Hz	1268 W	51.15 Hz		-
Step e) 50.70 Hz $\pm$ 0.10 Hz	1589 W	50.70 Hz		-
Step f) 50.45 Hz $\pm$ 0.05 Hz	1769 W	50.45 Hz		-
Step g) 50.00 Hz $\pm$ 0.01 Hz	1803 W	50 Hz		-

Steps as defined in EN 50438

**12. Power output with falling frequency test:** This test should be carried out in accordance with EN 50438 Annex D.3.2 active power feed-in at under-frequency.

Test sequence	Measured <b>Active Power</b> Output	Frequency	Primary power source
Test a) 50 Hz $\pm$ 0.01 Hz	3598 W	50 Hz	NA
Test b) Point between 49.5 Hz and 49.6 Hz	3605 W	49.6 Hz	NA
Test c) Point between 47.5 Hz and 47.6 Hz	3595 W	47.6 Hz	NA

NOTE: The operating point in Test (b) and (c) shall be maintained for at least 5 minutes

### 13. Re-connection timer.

Test should prove that the reconnection sequence starts after a minimum delay of 20 s for restoration of voltage and frequency to within the stage 1 settings of Table 2. Both the time delay setting and the measured delay should be provided in this form; both should be greater than 20 s to pass. Confirmation should be provided that the Micro-generating Plant does not reconnect at the voltage and frequency settings below; a statement of “no reconnection” can be made.

Time delay setting	Measured delay		Checks on no reconnection when voltage or frequency is brought to just outside stage 1 limits of table 2.			
20	30s		At 266.2 V	At 180.0 V	At 47.4 Hz	At 52.1 Hz
Confirmation that the <b>Micro-generator</b> re-connects.		the does not	No reconnection	No reconnection	No reconnection	No reconnection

**14. Fault level contribution:** These tests shall be carried out in accordance with EREC G98 Annex A1 A.1.3.5 (**Inverter** connected) and Annex A2 A.2.3.4 (Synchronous).

For machines with electro-magnetic output			For <b>Inverter</b> output		
Parameter	Symbol	Value	Time after fault	Volts	Amps
Peak Short Circuit current	$i_p$	NA	20 ms	168.5	25.2
Initial Value of aperiodic current	$A$	NA	100 ms	119.8	15.0
Initial symmetrical short-circuit current*	$I_k$	NA	250 ms	59.3	0.8
Decaying (aperiodic) component of short circuit current*	$i_{DC}$	NA	500 ms	0	0
Reactance/Resistance Ratio of source*	$X/R$	NA	Time to trip	0.356	In seconds

For rotating machines and linear piston machines the test should produce a 0 s – 2 s plot of the short circuit current as seen at the **Micro-generator** terminals.

\* Values for these parameters should be provided where the short circuit duration is sufficiently long to enable

# Declaration



interpolation of the plot

<b>15. Logic Interface.</b>	Yes
<p>This equipment is equipped with RJ45 terminal for logic interface that being received the signal from the DNO, the connection should be installed per installation manual, and the signal should be a simple binary output that captured by RJ45 terminal( PIN 5 and 1 for detecting the signal). Once the signal actived, the inverter will reduce its active power to zero within 5s.</p>	
<b>16. Self-Monitoring solid state switching:</b> No specified test requirements. Refer to EREC G98 Annex A1 A.1.3.6 ( <b>Inverter</b> connected).	Yes/or NA
<p>It has been verified that in the event of the solid state switching device failing to disconnect the <b>Micro-generator</b>, the voltage on the output side of the switching device is reduced to a value below 50 V within 0.5 s.</p>	
<b>17. Cyber security</b>	Yes/or NA
<p>Confirm that the Manufacturer or Installer of the Micro-generator has provided a statement describing how the Micro-generator has been designed to comply with cyber security requirements, as detailed in 9.7.</p>	
<p>Please see the attached Cyber security statement document .</p>	
Additional comments	